

## in this issue >>>

- >>Scenery
- >>What are tortoises doing on a railroad?
- >>Member Highlight – Kathy Barnes
- >>Upcoming events
- >> What drives the trains?



Issue  
**Six**

Quarterly Insight into the Magic Valley Model Railroaders – 2<sup>nd</sup> Quarter 2024 Edition

# On The Rails



## Who We Are

### Magic Valley Model Railroaders

The Magic Valley Model Railroaders is a 501 (c) (3) non-profit organization housed in the Railroad Building on the Twin Falls County Fairgrounds. The club officially moved from a house-to-house model railroaders club to the fairgrounds in 1989 at the request of the then fair manager Cindy Demoney. We have grown into four active model railroads, G, O, HO and N scales. The club is comprised of volunteers who put in hours of work and funds to keep the trains moving.

Drop by the second Saturday of the month at noon to enjoy the trains, scenery and realism of the model railroads. And if you have a train you would like to run on one of our layouts, bring it out and give it a run on the rails.

Information about how we operate and an application can be found on our website at [www.mvmrr.com](http://www.mvmrr.com).

If you would like further information, you can email us at [mvmmodelrailroaders@gmail.com](mailto:mvmmodelrailroaders@gmail.com).

## Scenery Around the Layouts

Here are scenes from around the layouts. The pictures tell the story better than words.



So, what are all the sizes of model railroads?



### When the Crossing Lights are Flashing....

When the crossing light by the caboose is flashing, someone is in the building running trains. Come on in and see what is going on. There is never an admission charge to watch the trains. We are here for the enjoyment of the Magic Valley communities. Who knows, you might find something interesting.

## What drives the trains?

*Under the scenery and track is the world of wires, switches and tortoises.*

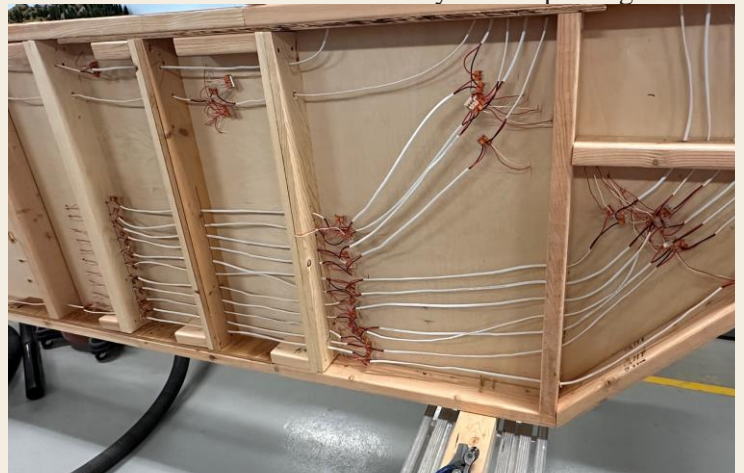
Tortoises? What is a tortoise doing under a railroad? In our world, a tortoise is actually an electronic device that electronically switches the trains from main line to a siding. In addition, under all the houses, buildings and mountains are hundreds of feet of wire and connectors. All of this together with some controlling electronic equipment is what makes up the real driving power to the locomotive's electric motors.

In days of old, you moved a lever on a transformer and all the trains on the track took off. Today on several of our layouts, technology has stepped in and now we control each locomotive separately. Through a hand-held throttle or cell phone, we control the locomotives speed and direction. Some locomotives even have sound, not only the horns and bells but the engineer walking to the locomotive on gravel or the fire door on a steam engine shutting. Anytime you are visiting and are curious, just ask one of the club members to show you around the "underside".



The N Scale Logging Mountain during the build.

The underside of the N Scale railyard and parking area.



# Meet Kathy Barnes, Scenery Genius

Everyone who visits us sees Kathy's great work. Be it the HO scale logging mountain with the fire scene, the farm scene just north of the mountain, the face of the mountain on the O scale layout or the Perrine Bridge scene on the N scale layout. And in the plans is a residential and business scene on HO with a running trolley to the trestle bridge canyon she created. Oh, Casey Jones locomotive is in the valley if you look. When someone gets an idea for a scene, Kathy is the primary source person to talk to. She spends many hours using plaster, concrete mix, paints, mixtures of all the above and more creating life like scenes. The question is: on the N Scale layout, how many hobos are sitting around the campfire and what are they cooking? Look at the lake on N Scale and see if you can determine how many people are in the kayaks and boat. All the people are put in place individually. We couldn't have the scenes we do without her. Thanks, Kathy, for creating the scenes our trains run through. Oh, did we forget, she is also our club secretary, keeping track of our meetings and records.



Kathy Barnes

Kathy would love to help you learn how to build scenery as she does. To join Kathy as a member of the Magic Valley Model Railroaders, you can go to our web site at [www.mvmrr.com](http://www.mvmrr.com) and click on "Application".

The Club exists both for the enjoyment of the hobby of model railroading by its members as a place to run trains and for providing service to the community by presenting the concepts of railroad history and operations in an educational and entertaining manner.

Magic Valley Model Railroaders is a registered 501(c)(3) nonprofit organization that is governed by by-laws. A copy of the by-laws is available on our web site. The building is appropriately located next to the railroad caboose. There are four model train scale layouts. Inside of the building is N, HO and O. Outside is the G scale.

Membership is based on the desire to be a part of the club.

*Want a special train visit? >>>*

*If you are a school, club or other organization and would like a special visit, please email us or call us.*

If your group would like to come out at a time other than when we are normally open, please let us know. We will do our best to accommodate you. Send us an email at [info@mvmmodelrailroaders.com](mailto:info@mvmmodelrailroaders.com) telling us who you are, the date and time you would like to visit, how many would be visiting. In the case of youth groups, we expect the group to have sufficient adults to monitor the youth. Due to some of the volunteers living away, we ask at least ten people in a group and three days' notice for a visit.



*Are the layouts taken down after the fair?*

*No, they are there all year round. The outside train, G Scale is put into hibernation due to the cold weather. The inside trains are there and run all year long with a couple of big shows.*



## *What's coming up?*

Below is our calendar as of the day this newsletter was published.

**Saturday, June 8 – Club Meeting at 11 and Open House from noon until 3, at the Fairgrounds.**

**Saturday, July 13 – Club Meeting at 11 and Open House from noon until 3, at the Fairgrounds.**

**Saturday, August 10 – Club Meeting at 11 and Open House from noon until 3, at the Fairgrounds.**

To get updates as the calendar changes, email us that you would like to be added to our email list.

**Our trains run on donations, Thank you for yours.**



# finalthoughts...

*From Marvin Barnes, Editor, Magic Valley Model Railroaders*

The real story behind the scenes are the members. We have members who live in the Rupert/Heyburn area. One member is actually an air traffic controller at the Twin Falls Regional Airport. Another member is the symphony librarian for CSI. Several are Veterans. One of our volunteers spent the last part of her career as a case manager for the refuge program at CSI. How about the coordinator for the 4H program in southern Idaho and he has four boys at home.

So, what is all of this saying? We are just like you, working and retired. All of us have specialties and we all share our knowledge to help others learn.

One member is into building buildings so complete they have offices in them. Another has the gift of spending many hours on his back under the layout doing his magic. Still another can look at an old locomotive and before long it is racing around the track. And a couple just love to run the trains and help the kids smile at the sounds and sights of the club.

Right now, our club membership is down. If you have ever had or maybe still have the desire to work in model railroading, we would love to talk with you.

Oh, did I mention the teenager who shows us all up?



coming up>>>

## *In The Next Issue*

*Meet Randy Geisick, House Builder*

*So how was the fair?*

*What is next?*

*Getting ready for winter*



**Magic Valley Model Railroaders**  
**215 Fair Avenue, Filer, ID 83328**  
**www.mvmrr.com**  
**208-934-7787**

## **Twin Falls Count Fair is less than 100 days away.**

Plan on coming out and visiting us. We will be running trains every day from 11 a.m. until 8 p.m. If you are a modeler and live in the Magic Valley area and want to run trains with us, please email us at [mvmmodelrailroaders@gmail.com](mailto:mvmmodelrailroaders@gmail.com) with your information. We would love to have you join us behind the scenes during the Fair. We will be running a 50/50 raffle again.



**When the crossing lights are flashing, trains are running. Come on in!!**

